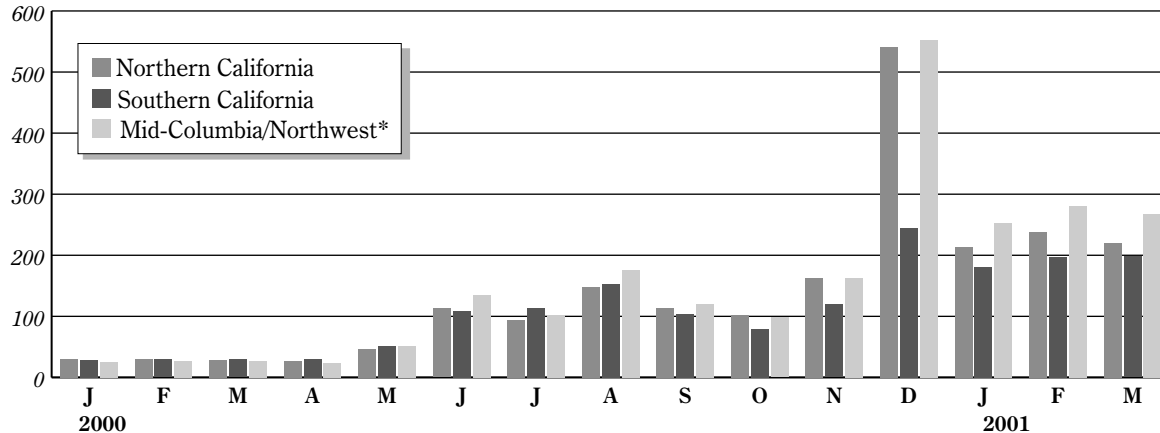


Northwest pays more for wholesale power

What follows are average monthly prices per megawatt-hour in regional markets. Northwest and California markets were comparable for much of 2000, with Northwest prices edging higher in December during a cold spell that drove up prices to record highs. But, in the first three months of this year, prices of the "mid-Columbia" - where utilities in the Northwest buy their power - were on average 16 percent higher than prices in Northern California and 28 percent higher than in Southern California.



*The mid-Columbia market serves Oregon, Washington, Idaho and parts of Montana. The "mid-Columbia" refers to four dams along the Columbia River, with switch yards that serve as delivery points for some power sales.

Source: Analysis of the markets was conducted by McCullough Research, a Portland-based utility consultant, at the request of The Seattle Times. It was based on daily-price surveys compiled by Energy Market Report, a utility-industry newsletter that tracks the mid-Columbia and other Western power markets.