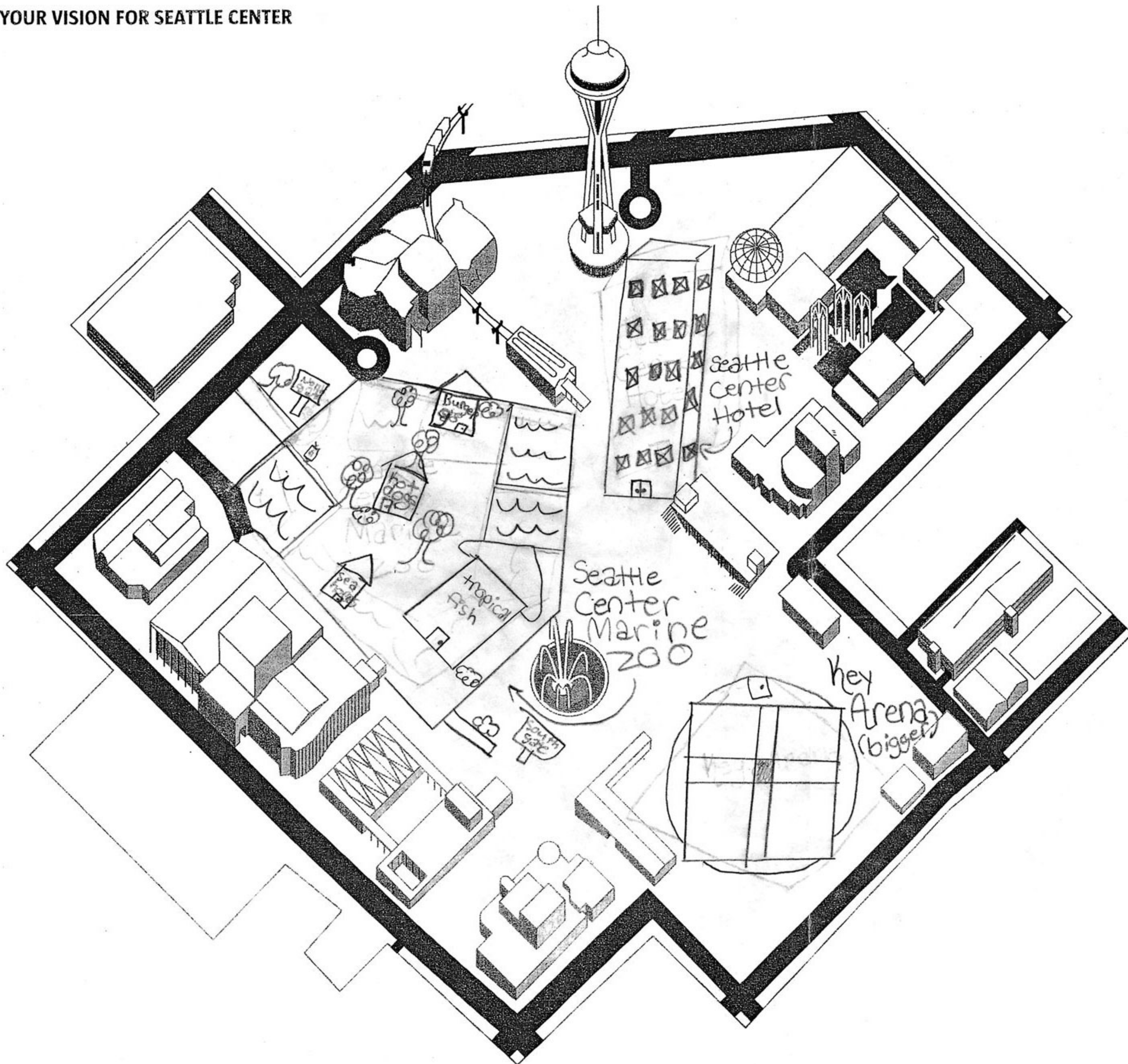


YOUR VISION FOR SEATTLE CENTER



THE SEATTLE TIMES

Giuliana Afonso proposes a marine zoo with dolphins and whales. She also drew onto her plan a high-rise hotel next to the Space Needle so “people from other places could come and see what Seattle has to offer.” Both the marine zoo and the hotel, she said, would make a lot of money for the city.